



### Main features

- Robust stainless housing for harsh environment conditions
- Accuracy of 0.5% FS
- Compensated temperature range -40 °C ... +85 °C for stable pressure measurements
- Tested according railway standard EN 50155:2007
- External programming of zero point and span with FlexPro-grammer 9701

### Applications

- Railway braking systems
- Railway cooling systems for power generation
- Interior cooling systems
- Pneumatic subsystems

### Technical specifications

Measuring principle	Thick film on ceramic
Measuring ranges	0 ... 2.5 bar up to 0 ... 250 bar
Type of pressure	Relative
Accuracy (20 °C)	0.5% FS <small>(includes linearity, hysteresis, repeatability, error of span and zero point according limit point adjustment)</small>
Zero thermal drift	≤ ± 0.08% FS/10 K
Span thermal drift	≤ ± 0.08% FS/10 K
Long term stability	0.2% FS / Year
Response time (10 ... 90%)	≤ 5 ms
Process connections	See page 3

### Environment

Temperature	
Storage	-55 ... + 120°C
Compensated range	-20 ... + 60°C
Medium	-50 ... + 125°C
Ambient	-50 ... + 85°C

Temperature specifications can differ in dependance of sealing material

Protection rating	IP65 (EN 60529) up to IP67 depending on electrical connection
Shocks & Vibrations test	IEC 61373

### Electrical specification

Output signal / Power supply	4 ... 20 mA / 8 ... 32 VDC 0...10 V / 13 ... 32 VDC
Load impedance	
Current output	$R_{\Omega} = (U_{\text{supply}} - 8 \text{ V}) / 20 \text{ mA}$
Voltage output	> 5 KΩ
Dielectric strength	500 VAC for 1 min
Insulation resistance	>100 MΩ at 500 VDC (optional >100 MΩ at 1000 VDC)
Electrical connections	See page 3

### Material

Process connection	SS 1.4404 AISI 316L
Housing	SS 1.4301 AISI 304
Diaphragm	Ceramic (96% Al <sub>2</sub> O <sub>3</sub> )
Sealing	FVMQ, NBR, EPDM, FKM (Viton®)

**Approvals**

CE conformity	Directive 2004/108/CE
Railway standard	EN 50155:2007
EMC	EN 55011 EN 61000-4 (2, 3, 4, 5, 6, 8, and 11)
EMC testing procedure	EN 50121-3-2

**Measuring ranges and overpressure safety**

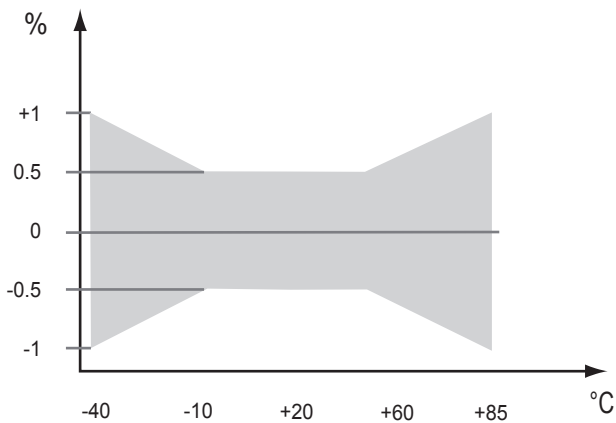
	Pressure in bar						
Pressure range	0 ... 2.5	0 ... 4	0 ... 6	0 ... 10	0 ... 16	0 ... 25	0 ... 40
Over pressure	4	8	12	20	32	50	80
Burst pressure	7	12	18	30	48	75	120

	Pressure in bar			
Pressure range	0 ... 60	0 ... 100	0 ... 160	0 ... 250
Over pressure	120	200	320	360
Burst pressure	180	300	480	480

\*Increased overpressure resistance on request

**Total error band**

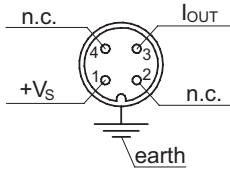
Accuracy 0.5 % FS -10 °C ... + 60 °C



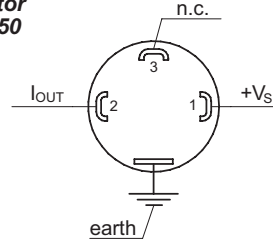
## Electrical connections

Signal at 4...20 mA

**M12**  
4-pins

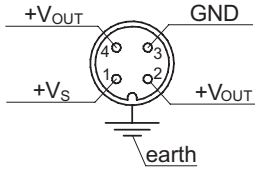


**Connector**  
**DIN 43650**

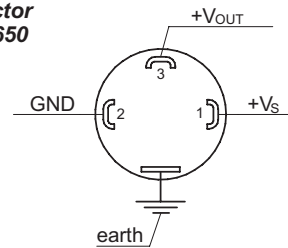


Signal at 0...10V

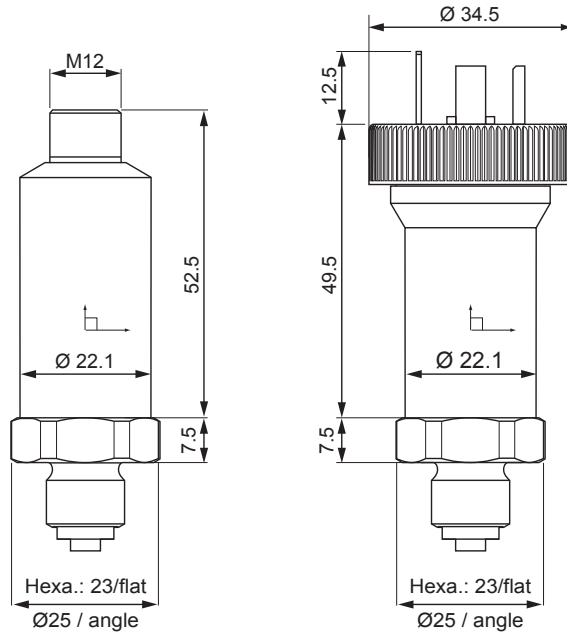
**M12**  
4-pins



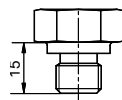
**Connector**  
**DIN 43650**



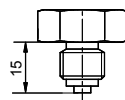
## Dimensions (mm)



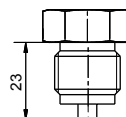
## Hydraulic connections



G 1/4 DIN 3852-E



G1/4 EN837



G1/2 EN837



G1/4 Female

## Ordering details EF6

	EF6	-	xxxx	.	x	.	x	.	xxx	.	x	.	xx	.	x
<b>Model</b>	Pressure transmitter	EF6													
<b>Customer name</b>			xxxx												
<b>Electrical + Process connection</b>															
DIN 43650 + G½ EN837															1
M12 + G½ EN837															2
M12 + G¼ EN837															3
DIN 43650 + G¼ female															4
DIN 43650 + G¼ EN837															5
DIN 43650 + G¼ DIN 3852															6
M12 + G¼ DIN 3852															7
<b>Options</b>															
With DIN 43650 standard screw or no connector when M12															0
With DIN 43650 with knurl screw															1
<b>Pressure range and unit in bar</b>															
0...2.5															B18
0...4															B19
0...6															B20
0...10															B22
0...16															B24
0...25															B26
0...40															B27
0...60															B29
0...100															B31
0...160															B33
0...250															B35
*Customized pressure ranges on request															
<b>Kind of pressure</b>															
Relative															R
<b>Output signal</b>															
4...20mA															A1
0...10V															A2
<b>Sealing</b>															
FVMQ (standard)															0
NBR															1
EPDM															2
FKM (Viton®)															3